

2014 Major Airline On-time Performance: Asia-Pacific



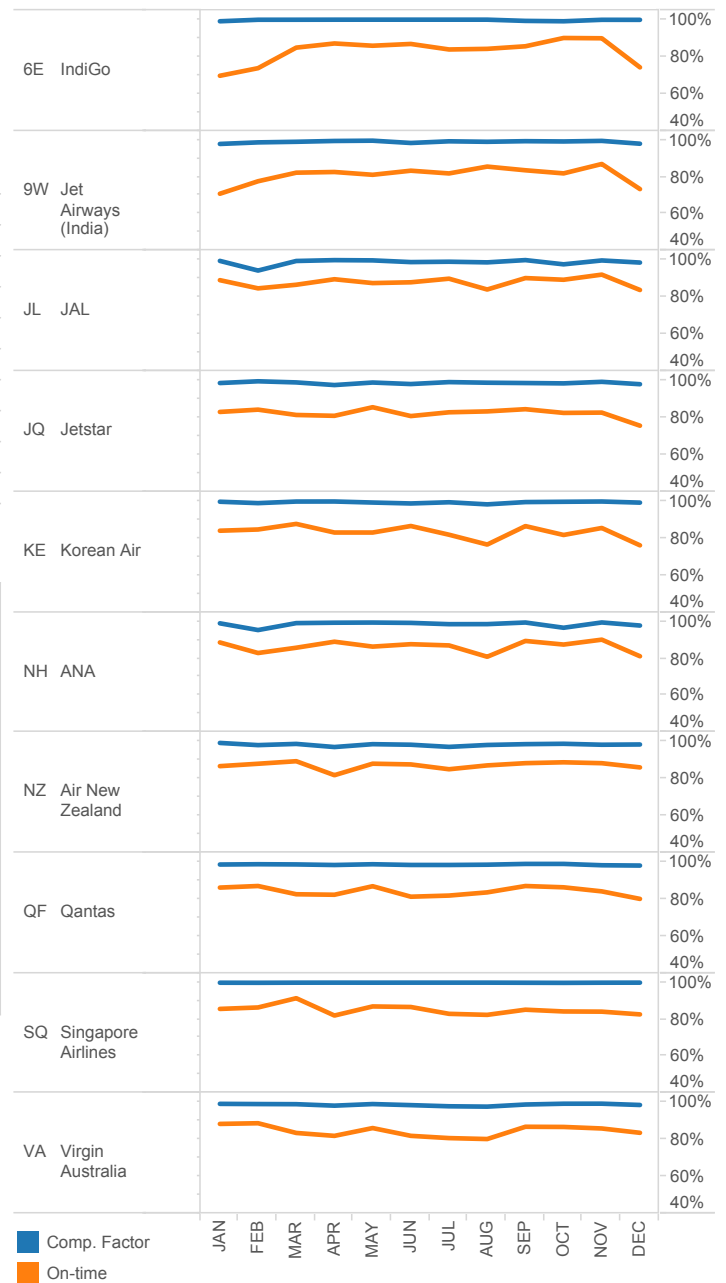
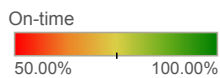
Airline Region
Asia-Pacific

Top 10 Major Airlines: Asia-Pacific (Ranked by 2014 On-time Arrival Performance)

			Flights	Seats (millions)	Tracked	Comp. Factor	On-time
1	JL	JAL	268,552	51.17	98.79%	98.67%	87.78%
2	NZ	Air New Zealand	191,791	17.48	98.45%	98.10%	86.97%
3	NH	ANA	440,517	68.68	96.17%	98.72%	86.53%
4	SQ	Singapore Airlines	84,398	26.49	99.77%	99.97%	85.09%
5	VA	Virgin Australia	180,942	25.15	99.32%	98.51%	84.34%
6	QF	Qantas	272,426	39.89	99.39%	98.58%	84.16%
7	6E	IndiGo	183,515	33.03	99.00%	99.78%	83.31%
8	KE	Korean Air	144,891	33.31	95.57%	99.38%	83.09%
9	JQ	Jetstar	115,127	21.31	98.34%	98.62%	82.24%
10	9W	Jet Airways (India)	175,229	22.15	92.50%	99.14%	81.15%

Scheduled Seat Capacity and On-time Arrival Performance

(NH) ANA On-time Arrival: 86.53% Seats: 68,679,158	(QF) Qantas On-time Arrival: 84.16% Seats: 39,887,348	(SQ) Singapore Airlines On-time Arrival: 85.09% Seats: 26,487,076	(VA) Virgin Australia On-time Arrival: 84.34% Seats: 25,149,868
	(KE) Korean Air On-time Arrival: 83.09% Seats: 33,311,477		(9W) Jet Airways (India) On-time Arrival: 81.15% Seats: 22,145,995
(JL) JAL On-time Arrival: 87.78% Seats: 51,169,891	(6E) IndiGo On-time Arrival: 83.31% Seats: 33,032,700	(JQ) Jetstar On-time Arrival: 82.24% Seats: 21,310,217	



FlightStats 2014 On-time Performance Service Awards

2014 Global Airline On-time Performance



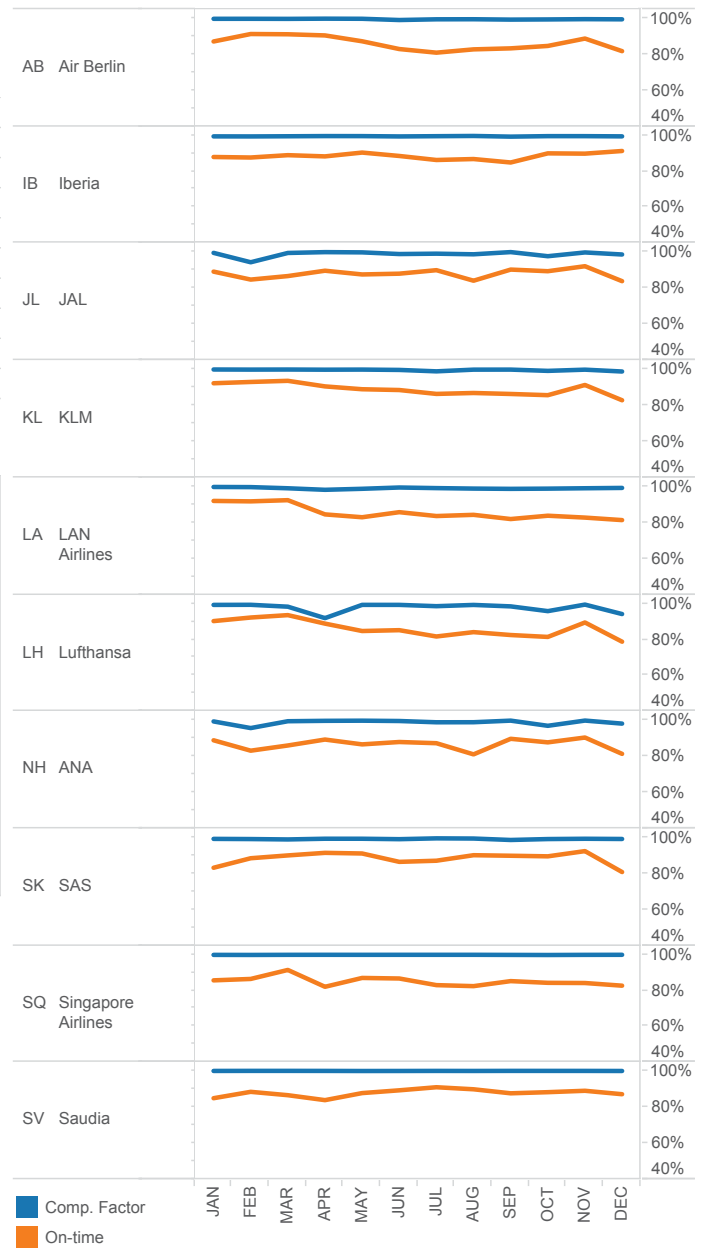
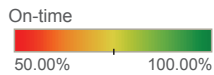
Top 10 Global Airlines

(Ranked by 2014 On-time Arrival Performance)

			Flights	Seats (millions)	Tracked	Comp. Factor	On-time
1	KL	KLM	228,800	36.73	94.71%	99.50%	88.66%
2	SK	SAS	297,369	39.59	92.26%	99.15%	88.62%
3	IB	Iberia	172,795	24.64	97.67%	99.64%	88.46%
4	JL	JAL	268,552	51.17	98.79%	98.67%	87.78%
5	SV	Saudia	189,297	33.74	88.94%	99.97%	87.76%
6	NH	ANA	440,517	68.68	96.17%	98.72%	86.53%
7	LH	Lufthansa	540,342	85.33	99.31%	97.97%	86.21%
8	AB	Air Berlin	205,595	34.38	98.73%	99.48%	85.70%
9	LA	LAN Airlines	224,143	35.08	87.17%	99.10%	85.63%
10	SQ	Singapore Airlines	84,398	26.49	99.77%	99.97%	85.09%

Scheduled Seat Capacity and On-time Arrival Performance

(LH) Lufthansa On-time Arrival: 86.21% Seats: 85,327,722	(JL) JAL On-time Arrival: 87.78% Seats: 51,169,891	(LA) LAN Airlines On-time Arrival: 85.63% Seats: 35,083,662	(AB) Air Berlin On-time Arrival: 85.70% Seats: 34,376,100
(NH) ANA On-time Arrival: 86.53% Seats: 68,679,158	(SK) SAS On-time Arrival: 88.62% Seats: 39,586,932	(SV) Saudia On-time Arrival: 87.76% Seats: 33,739,734	(IB) Iberia On-time Arrival: 88.46% Seats: 17,279,500
	(KL) KLM On-time Arrival: 88.66% Seats: 36,731,294	(SQ) Singapore Airlines On-time Arrival: 85.09% Seats: 26,490,000	



FlightStats 2014 On-time Performance Service Awards