



JAL Announces Flight Schedule for Haneda–Doha Route

~ Ticket sales for the 2024 summer schedule starts today ~

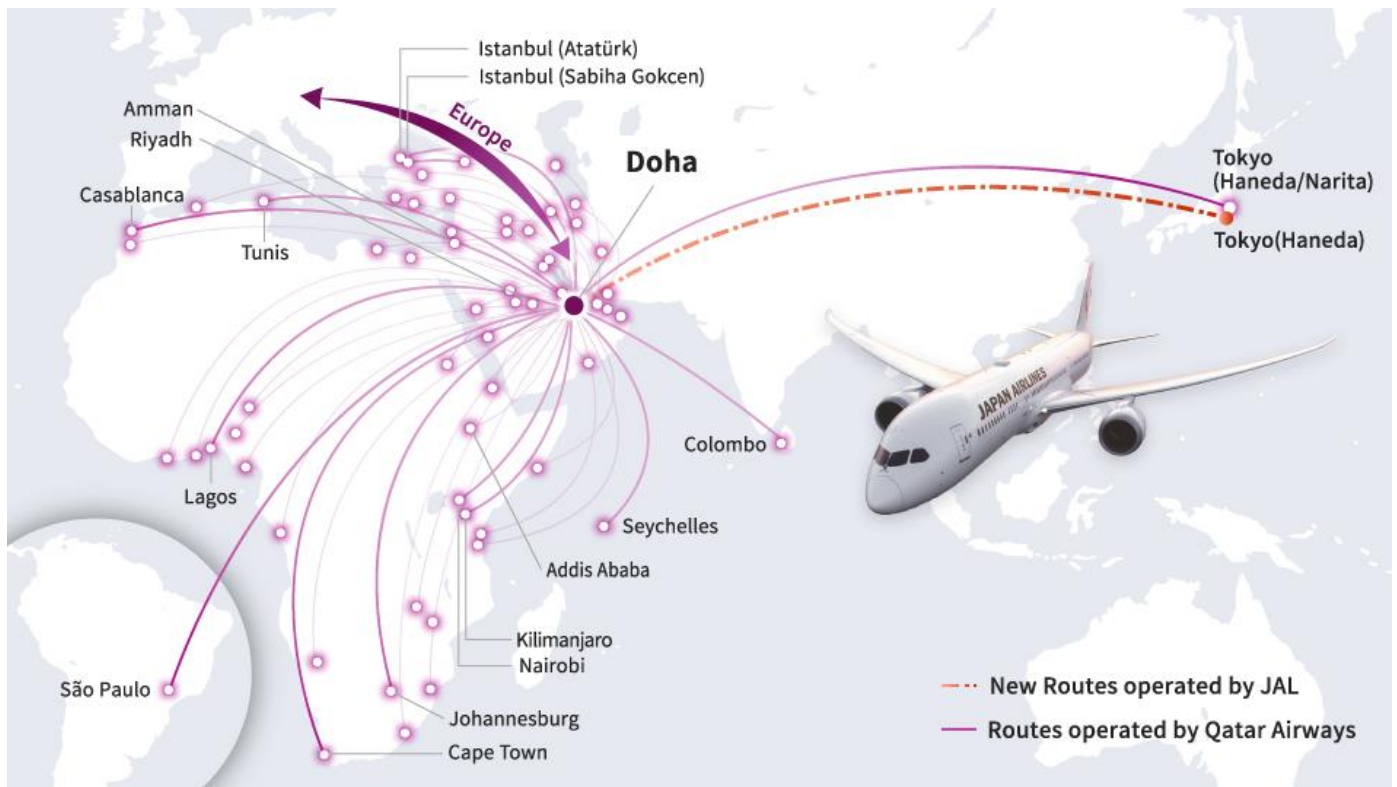
Discover New Journey

JAL has decided on the flight schedule for the Haneda–Doha route, which will be the first direct flight to the Middle East by a Japanese airline. The daily flights will operate from March 31, 2024*. Furthermore, ticket sales for the 2024 summer schedule begin today. *Flights from Doha start April 1, 2024.

Through the international network of Qatar Airways, a member of the oneworld® alliance, connections to the Middle East, Africa, and South America will be possible from Doha. This will enable smooth travel to more destinations, or expands the options for travel, allowing passengers to visit Doha city during layovers or spend time in the lounges.

Doha, the capital of Qatar, is a captivating city that seamlessly blends tradition and modernity. It embraces its rich heritage while offering modern facilities, hotels, and infrastructure for immigrants and tourists. The city's diverse cultural influences and culinary offerings from around the world make it an intriguing destination to explore.

The JAL Group aims to create social and economic value by fostering relationships and connections through travel, contributing to the progress and development of society. The company will continue to enhance its route network, challenge itself to improve customer convenience, comfort, and the quality of its products and services.



The service details and campaign information for the Doha route will be announced on the website below;

<https://www.jal.co.jp/jp/en/inter/route/doha/>



Flight numbers and operation schedule (March 31, 2024 – October 26, 2024)

| Flight | Route | Schedule (Local time) | Equipment/Class | Remarks |
|--------|---------------|--------------------------|--|--------------------------------------|
| JL059 | Haneda → Doha | 22:50 – 04:40(+1) | 787-9 Business Class Economy Class | Daily service From March 31, 2024 |
| JL050 | Doha → Haneda | 07:15 – 23:55 | | Daily service From April 01, 2024 |

- This flight will be code-shared with Qatar Airways. JAL code-sharing on the Tokyo-Doha route operated by Qatar Airways will continue as well.
- The above plans and schedules are subject to government approval.

Examples of connections to various destinations (2024 summer schedule)

*The schedules are current and subject to change.

【Departure from Japan】

Haneda-Riyadh (Saudi Arabia)

| Travel time via London | Travel time via Doha | Total travel time reduction |
|------------------------|----------------------|-----------------------------|
| 26hours50min | 17hours10min | 9hours40min |

Haneda – Johannesburg (South Africa)

| Travel time via London | Travel time via Doha | Total travel time reduction |
|------------------------|----------------------|-----------------------------|
| 36hours10min | 23hours40min | 12hours30min |

Haneda – Casablanca (Morocco)

| Travel time via London | Travel time via Doha | Total travel time reduction |
|------------------------|----------------------|-----------------------------|
| 27hours35min | 23hours30min | 4hours05min |

【Departure from overseas】

Riyadh (Saudi Arabia)-Haneda

| Travel time via London | Travel time via Doha | Total travel time reduction |
|------------------------|----------------------|-----------------------------|
| 23hours00min | 13hours30min | 9hours30min |

Cairo (Egypt) – Haneda

| Travel time via London | Travel time via Doha | Total travel time reduction |
|------------------------|----------------------|-----------------------------|
| 25hours15min | 15hours40min | 9hours35min |

■ Fares

The following fares are available from Japan to Doha. For connecting cities other than Doha, the following fares will apply, along with an additional amount depending on the destination.

| Class | Fare Name | Round-trip fare (including fuel surcharge) |
|----------------|-----------|--|
| Business Class | Flex | JPY 514,000~ |
| | Semi-Flex | JPY 374,000~ |
| | Special | JPY 344,000~ |
| Economy Class | Flex | JPY 324,000~ |
| | Semi-Flex | JPY 194,000~ |
| | Special | JPY 174,000~ |

*The above fares are based on the applicable fuel surcharge (94,000 yen/roundtrip) for JAL international segments to/from Japan when purchased between December 7, 2023 and January 31, 2024.